

ROOF MASTIC

WET OR DRY APPLICATIONS



QUART #182Q
GALLON #182G

PUTTY KNIFE



WIDTH
1-1/2" #PUK-15
3" #PUK-30

2" PLASTIC #DS-20
(DISPOSABLE)

CRIMPING TOOL



FOR SINGLE WALL SHEET METAL VENT PIPE

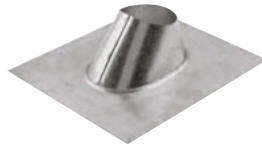
5 BLADE #SMCT-5

TIN SNIPS



CUTS:
STRAIGHT (YELLOW) #ATSY
LEFT (RED) #ATSR
RIGHT (GREEN) #ATSG

ROOF FLASHINGS



GALVANIZED STEEL FLASHING

PIPE SIZE:
(NO-HUB, PLASTIC, STEEL, ETC.)

1/2" #12F
3/4" #34F
1" #1F
1-1/4" #114F
1-1/2" #112F
2" #2F
3" #3EF
4" #4EF
6" #6EF
8" #8RF

VENT PIPE, SINGLE WALL:

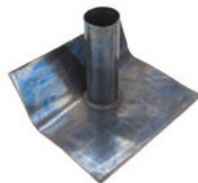
3" #3CF
4" #4CF
6" #6CF

VENT PIPE, DOUBLE WALL:

3" #3EF
4" #4EF
6" #6EF
8" #8RF

OVAL VENT PIPE:

4" #40F



LEAD FLASHING

1-1/2" #LF415
2" #LF420
3" #LF430
4" #LF440

OTHER SIZES AVAILABLE

SHEET METAL VENTING



STORM COLLAR

FITS OVER VENT PIPE:

3" SINGLE WALL #3CSC
4" SINGLE WALL #4CSC
6" SINGLE WALL #6CSC

3" DOUBLE WALL #3ESC
4" DOUBLE WALL #4ESC
6" DOUBLE WALL #6ESC
8" DOUBLE WALL #8RSC

DUCT TAPE



2" WIDE

60 YARDS LONG

SILVER #DT-S

RED #DT-RED

BLACK #DT-BLK

BLUE #DT-BLU

WHITE #DT-WHT

We gladly accept...



SHEET METAL SCREWS

**TEK SCREW
HEX HEAD**



(100 PER BOX)

#8 x 1/2"	#TEKHW812
#8 x 3/4"	#TEKHW834
#8 x 1"	#TEKHW81
<hr/>	
#10 x 1/2"	#TEKHW1012
#10 x 3/4"	#TEKHW1034
#10 x 1"	#TEKHW101

**SHARPEEZ
HEX HEAD
SLOTTED**



(100 PER BOX)

#8 x 1/2"	#SP812
#8 x 3/4"	#SP834
#8 x 1"	#SP81

**MAGNETIC
HEX
TOOL**



SCREW
SIZE

1/4"	#8	#MT8
5/16"	#10	#MT10

**PLUMBERS
TAPE**

26 GA.

3/4" x 10'



#PT-26

SHEET METAL VENTING



**SINGLE
WALL
ADJUSTABLE
90°**

SINGLE WALL:

3"	#3AL
4"	#4AL
6"	#6AL
8"	#8AL



**SINGLE WALL
VENT PIPE**

30" LONG:

3"	#3VP
4"	#4VP
6"	#6VP
8"	#8VP

10' LONG:

3"	#3CP
4"	#4CP



**VENT
COWL
CAP**

**FOR SINGLE WALL
VENT PIPE**

3"	#3CWL
4"	#4CWL
6"	#6CWL
8"	#8CWL

(FOR DBL WALL, SEE NEXT PAGE)

SHEET METAL VENTING



**SINGLE
WALL
VENT
WYE**

3"	#3VY
4"	#4VY



**SINGLE
WALL
VENT
TEE**

3"	#3VT
4"	#4VT
6"	#6VT



**SINGLE
WALL
REDUCER**

CRIMP ON SMALL SIDE

4" x 3" CRIMP	#4-3BTR
6" x 4" CRIMP	#6-4BTR



**SINGLE
WALL
INCREASER**

CRIMP ON LARGE SIDE

3" x 4" CRIMP	#3-4BTI
4" x 6" CRIMP	#4-6BTI

SHEET METAL VENTING

BUCKET



FOR TRANSITION FROM SINGLE WALL TO DOUBLE WALL VENT PIPE

BUCKET ONLY:

3" & 4"	#3-4AB
6"	#6AB
8"	#8AB

BRACKET SUPPORT:

3" & 4"	#3-4ABH
6"	#6ABH
8"	#8ABH

VENT PIPE HANGER SUPPORT



FITS DOUBLE WALL "B" VENT

3"	#3VPH
4"	#4VPH
6"	#6VPH
8"	N/A



SHEET METAL VENTING



DOUBLE WALL ADJUSTABLE 90°

DOUBLE WALL "B" VENT:

3"	#3EAL
4"	#4EAL
6"	#6EAL
8"	#8RAL



DOUBLE WALL "B" VENT PIPE

3" x 12"	#3E12
3" x 18"	#3E18
3" x 24"	#3E24
3" x 36"	#3E3
3" x 48"	#3E4
3" x 60"	#3E5
4" x 12"	#4E12
4" x 18"	#4E18
4" x 24"	#4E24
4" x 36"	#4E3
4" x 48"	#4E4
4" x 60"	#4E5
6" x 12"	#6E12
6" x 36"	#6E3
6" x 60"	#6E5
8" x 12"	#8R12
8" x 36"	#8R3
8" x 60"	#8R5

SHEET METAL VENTING



AMERI CAP

FOR DOUBLE WALL "B" VENT PIPE

3"	#3ECW
4"	#4ECW
6"	#6ECW
8"	#8RCW



PLUMBERS TAPE

26 GA.

3/4" x 10'

#PT-26



DOUBLE WALL TEE

4"
6"

#4ET
#6ET

Come on by!



WATER HEATERS

NATURAL GAS (COMMERCIAL)

3 YEAR WARRANTY



GAL	B.T.U.	
75	75,100	#WHGC7575
82	156,000	#WHGC82156
100	76,000	#WHGC10075
100	199,900	#WHGC100200
100	270,000	#WHGC100270
100	399,900	#WHGC100400

FOR DIMENSIONS OR VENT SIZE, PLEASE CALL

ELECTRIC (COMMERCIAL)

3 YEAR WARRANTY



STANDARD (HEAVY DUTY AVAILABLE)

GAL	VOLT/WATT	
6	208/2000	#WHEC6208
6	277/2000	#WHEC6277

FOR HEATERS BELOW, SPECIFY: VOLTAGE, WATTS & PHASE

10	#EGSP10
15	#EGSP15
20	#EGSP20
30*	#ELD30
40*	#ELD40
50*	#ELD52
65	#ELD66
80	#ELD80
120	#ELD120

*STUBBY AVAILABLE

WATER HEATERS



NATURAL GAS (RESIDENTIAL)

6 YEAR WARRANTY

10 YEAR SEE BELOW

GALLON	B.T.U.	
30	30,000	#WHG30
40	38,000	#WHG40
50	40,000	#WHG50
60	50,000	#WHG60
75	75,100	#WHG75
100	75,000	#WHG100

FOR DIMENSIONS, PLEASE CALL

FOR 10 YEAR WARRANTY, ORDER #SP20079 TO EXTEND WARRANTY ON THE ABOVE HEATERS

ELECTRIC (RESIDENTIAL)

6 YEAR WARRANTY



GALLON	VOLT/WATT	
2.5	120/1440	#WHE25 (INCLUDES PLUG-IN CORD)

6	120/2000	#WHE6
10	120/2000	#WHE10
15	120/2000	#WHE15
20	120/2000	#WHE20
30	240/4500	#WHE30
40	240/4500	#WHE40
50	240/4500	#WHE50

STUBBY

30	240/4500	#WHEL30
38	240/4500	#WHEL40
47	240/4500	#WHEL50

FOR DIMENSIONS, PLEASE CALL

WATER HEATERS



CHRONOMITE ELECTRIC/TANKLESS

VOLT	WATT	AMP	
120	2.4	20	#SR20L120
120	3.6	30	#SR30L120
208	2.3	11	#S23L208
208	4.1	20	#SR20L208
208	6.2	30	#SR30L208
208	8.3	40	#SR40L208
240	3.0	13	#S30L240
240	4.8	20	#SR20L240
240	7.2	30	#SR30L240
240	9.6	40	#SR40L240
277	4.1	15	#SR15L277
277	5.5	20	#SR20L277
277	8.3	30	#SR30L277
277	9.0	32	#S90I277



ARISTON ELECTRIC

GALLON	
2-1/2	#GL25
4	#GL4
7	#GL8

**** WEBSITES ****

RHEEM:
www.rheem.com

CHRONOMITE:
www.chronomite.com

ARISTON:
www.boschpro.com

WATER HEATER ACCESSORIES



**GAS FLEX CONNECTOR
STAINLESS STEEL**

(VALVE SOLD SEPARATELY)

1/2" x 18"	#GFC518
1/2" x 24"	#GFC524
1/2" x 36"	#GFC536
1/2" x 48"	#GFC548
1/2" x 60"	#GFC560
<hr/>	
3/4" x 24"	#GFC724
3/4" x 24"	#GFC724FB
FULL BORE	↑
3/4" x 36"	#GFC736
3/4" x 48"	#GFC748
3/4" x 60"	#GFC760

GAS FLEX VALVE



FEMALE	GAS
<u>INLET</u>	<u>FLEX</u>
	<u>SIZE</u>
1/2"	1/2" #TBV-8-8
3/4"	3/4" #TBV-10-12

OTHER SIZES, PAGE 115

GAS BALL VALVE



<u>FEMALE x FEMALE</u>	
1/2"	#TBV-8
3/4"	#TBV-12
3/4" FULL PORT	#TBV-12F

OTHER SIZES, PAGE 115

WATER HEATER ACCESSORIES



WATER FLEX CONNECTOR

COPPER:

3/4" x 12"	#WBOO-12
3/4" x 18"	#WBOO-18
3/4" x 24"	#WBOO-24

STAINLESS STEEL:

3/4" x 18"	#SFWC718
3/4" x 24"	#SFWC724
1" x 18"	#SFWC1018
1-1/4" x 18"	#SFWC1218
1-1/2" x 18"	#SFWC1518
2" x 18"	#SFWC2018



EARTHQUAKE STRAP

FITS TANKS

UP TO 80 GALLON	#QS50
UP TO 120 GALLON	#QS120



**WATER HEATER PAN
(SIDE OUTLET)**

DIAMETER

16"	#16S
19"	#19S
22"	#22S
24"	#24S
26"	#26S
30"	#30HDS
36"	#36ST

WATER HEATER ACCESSORIES



**T&P RELIEF VALVE
(TEMPERATURE & PRESSURE)**

RELIEF SETTING:
150# AND/OR 210°F

**MALE FEMALE
INLET OUTLET**

3/4" 3/4" #100XL
100,000 B.T.U.

3/4" 3/4" #L100XL
LONG SHANK
100,000 B.T.U.

3/4" 3/4" #40XL-5
200,000 B.T.U.

1" 1" #40XL-4
500,000 B.T.U.

OTHER T&P VALVES
AVAILABLE



GAS SHUT-OFF VALVE

#210-57

3/4" TANK CONNECTION
1/2" GAS CONNECTIONS

PROVIDES PROTECTION FOR
GAS WATER HEATERS AGAINST
OVERHEATING BY SHUTTING
OFF GAS SUPPLY AT 210°F.
USE WITH #3L-7150 RELIEF
VALVE.

WATER HEATER ACCESSORIES

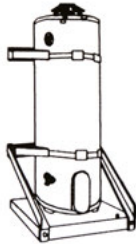
WATER HEATER STAND



FITS TANKS:

UP TO 50 GALLON #S-22
UP TO 75 GALLON #S-26

WATER HEATER STAND

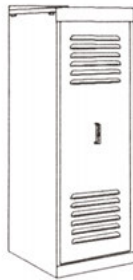


WALL MOUNT

(STRAPS INCLUDED)

26" x 26" #WM-26
30" x 30" #WM-30

WATER HEATER ENCLOSURE (3 SIDED)



74" TALL

24" x 24" #R24-BL
(40 GALLON CAPACITY)

30" x 30" #R30-BL
(75 GALLON CAPACITY)

WATER HEATER ACCESSORIES



ELEMENT (SCREW-IN/COPPER)

VOLT	WATT	
120	1500	#SP10874FH
120	2000	#SP10874GH
208	2000	#SP10872GH
208	3000	#SP10872JH
208	4500	#SP10872MH
208	6000	#SP10872QH
240	3000	#SP10552JH
240	4500	#SP10552MH
240	6000	#SP10552QH
277	2000	#SP10875GH
277	3000	#SP10875JH
277	4500	#SP10875ML
277	6000	#SP10875QH
480	3000	#SP10873JL
480	4500	#SP10873ML
480	6000	#SP10873QH

OTHER ELEMENTS AVAILABLE



ELEMENT WRENCH
#4946



THERMO-COUPLE (COPPER)

18"	#9500
24"	#9501
30"	#9502
36"	#9503

WATER HEATER ACCESSORIES



EXPANSION TANK
3/4" MALE INLET

FOR POTABLE HOT WATER SYSTEMS

TANK VOLUME	
2.1 GALLON	#PLT-5
4.5 GALLON	#PLT-12
8.5 GALLON	#PLT-20



GAS THERMOSTAT
FOR ULTRA LOW NOX HEATERS

#SP-14270-M
(NEED HEATER MODEL & SERIAL #)



ELECTRIC THERMOSTAT

THERMOSTAT & HIGH LIMIT
UPPER: 208/240/277/480 VOLT
#SP11698

UPPER: 120 VOLT
#SP11700

THERMOSTAT
LOWER: 208/240/277/480 VOLT
#SP11695



DIP TUBE, 54" #SP11248R
ANODE ROD, 44" #SP11309C

TANKLESS WATER HEATER ACCESSORIES

LIME & SCALE FILTER



HOUSING & FILTER:

3/4" #AME52
1-1/2" #AME53

23" TALL

HEATER WARRANTY MAY BE VOIDED WITHOUT FILTER & PROPER MAINTENANCE



VALVE KIT

INCLUDES PRESSURE RELIEF VALVE

3/4" THREADED #TIKT
3/4" SWEAT #TIKS

MANUFACTURER RECOMMENDS VALVE KIT INSTALLATION FOR PROPER MAINTENANCE

PRESSURE RELIEF VALVE 150#



3/4" #3L-7150

GAS FLEX



FULL BORE

3/4" x 24" #GFC724FB
(FULL PORT VALVE, PAGE 115)

TANKLESS WATER HEATERS



**TAKAGI
NATURAL GAS**

MODEL TH3-M
CONDENSING HEATER
120,000 BTU
(MAX GPM: 6.6)

**INDOOR #TH3M-IN
OUTDOOR #TH3M-OS**

ONLY REQUIRES 1/2" GAS SUPPLY. INDOOR UNIT USES PVC VENT PIPING.

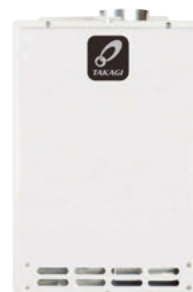
www.takagi.com

MODEL TH3-S
CONDENSING HEATER
180,000 BTU
(MAX GPM: 8)

**INDOOR #TH3S-DV
OUTDOOR #TH3S-OS**

REQUIRES 3/4" GAS SUPPLY. INDOOR UNIT USES PVC VENT PIPING.

TANKLESS WATER HEATERS



**TAKAGI
NATURAL GAS**

MODEL TK-4
NON-CONDENSING HEATER
190,000 BTU
(MAX GPM: 8)

**INDOOR #TK4-IN
OUTDOOR #TK4-OS**

REQUIRES 3/4" GAS SUPPLY. INDOOR UNIT REQUIRES 4" STAINLESS STEEL CATEGORY THREE VENT PIPING.

www.takagi.com

MODEL TH-3
CONDENSING HEATER
199,000 BTU
(MAX GPM: 10)

**INDOOR #TH3-DV
OUTDOOR #TH3-OS**

REQUIRES 3/4" GAS SUPPLY. INDOOR UNIT USES PVC VENT PIPING.

****OTHER HEATERS AVAILABLE****

FLUSHER DESCALER KIT



SEE PAGE 231



CONDENSATE NEUTRALIZER REQUIRED FOR CONDENSING HEATERS

3/8" FIP #THCN-3

STAINLESS STEEL VENTING

CATAGORY 3
(FOR TANKLESS WATER HEATERS)

STAINLESS HEATER VENT ADAPTER



MUST USE THIS ADAPTER TO CONNECT VENT TO HEATER

4" #SVHA40

STAINLESS VENT 90°



NON-ADJUSTABLE

4" #SV940

STAINLESS VENT 45°



NON-ADJUSTABLE

4" #SV440

CONDENSATE DRAIN



VENT INSTALLATION:

VERTICAL #SVCDV40
HORIZONTAL #SVCDH40

STAINLESS STEEL VENTING

CATAGORY 3
(FOR TANKLESS WATER HEATERS)



STAINLESS STEEL VENT PIPE:

- 4" x 6" #SVP4060
- 4" x 12" #SVP4012
- 4" x 18" #SVP4018
- 4" x 24" #SVP4024
- 4" x 36" #SVP4036
- 4" x 48" #SVP4048



STAINLESS STEEL FLASHING

4" #SVRF40



STAINLESS STEEL STORM COLLAR

4" #SVSC40



VENT SEALANT

3 OZ. #SVS



STAINLESS STEEL VENT CAP

4" #SVVCA40

STAINLESS STEEL VENTING

CATAGORY 3
(FOR TANKLESS WATER HEATERS)



THRU THE WALL VENT KIT

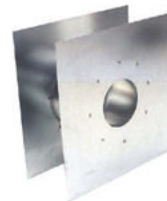
#TWVK

FOR TAKAGI
NON-CONDENSING HEATERS:
MODELS TK-JR2,
TK-4 AND TD-2



SIDE WALL TERMINATION BOX

4" #SVTB40



WALL THIMBLE

4" #SVWT40



FIRE STOP SUPPORT

4" #SVFS40

**ELKAY
DRINKING FOUNTAINS**



TWO-LEVEL
ELECTRIC WATER COOLERS

HIGH/LEFT #EZSTL8LC
HIGH/RIGHT #EZSTLR8LC

**BOTTLE
FILLING
STATION**



#EZS8WSLK

OTHER STYLES AVAILABLE

**WALL
MOUNT
COMPACT**



#EDF-15R

**WALL
MOUNT
FOUNTAIN,
ADA**



#EDFP-214C

SATIN FINISH, STAINLESS STEEL

OTHER STYLES AVAILABLE

**ELKAY
DRINKING FOUNTAINS**

ELECTRIC WATER COOLERS
FINISH: LIGHT GRAY GRANITE



**LOW
BACK**

#EZS8L



**HIGH
BACK**

#EHFSA8L



**FLOOR
MOUNT**

3 GPH

#FD7003L

(8 GPH #EFA8L)

**MANY OTHER FOUNTAINS
TO CHOOSE FROM**

**** WEBSITES ****

www.elkayusa.com

www.hawso.com

www.halseytaylor.com

**HAWS
DRINKING FOUNTAINS**



WALL MOUNT – WHITE
IDEAL FOR SCHOOLS
NON-ADA

TWO BUBBLERS #HAW1430
THREE BUBBLERS #HAW1409



**WHITE
FINISH,
ADA**

WALL MOUNT #HAW1311



CONCRETE

SINGLE #HAW3177

OTHER STYLES AVAILABLE



CONCRETE

DOUBLE #HAW3150

OTHER STYLES AVAILABLE

DRINKING FOUNTAIN PARTS

**PUSH
BUTTON
BUBBLER
ONLY**



#2194

**PUSH
BUTTON
BUBBLER
RETRO-FIT
KIT**



#2197

**BUBBLER
CARTRIDGE**



#BCART



CARTRIDGE TOOL #7047

**BUBBLER
WITH FLEX
GUARD**



#92715C

BUBBLER



#45866C

DRINKING FOUNTAIN PARTS



**HAWS
VALVE**

#5874SS

(REPAIR KIT: #VRK-5874)

PUSH BUTTON: (FOR ABOVE)
- FOR S.S. FOUNTAINS #PBA6
- FOR C.I. FOUNTAINS #PBA7



**HAWS
VALVE,
PLASTIC**

#5872

(REPAIR KIT: #VRK-5872)



BUBBLER

**SELF
CLOSING
VALVE**

1/2" INLET #2190

CLASSROOM SINK



STAINLESS STEEL

25" x 17" x 5"
#HAW4210

(FAUCETS SOLD SEPARATELY)

**EMERGENCY SHOWER
AND EYE WASH**



**DRENCH
SHOWER
&
EYE/FACE
WASH**

#8300-8309

www.hawesco.com

EYE/FACE WASH



**WALL
MOUNT**

#7260B-7270B

(P-TRAP SOLD SEPARATELY)

SPOUT EYE WASH



#KE-20

ADAPTS TO MOST
FAUCET SPOUTS

FAUCET/BUBBLER



CHICAGO #350CP CHICAGO #748665CP HAWS #5054LF